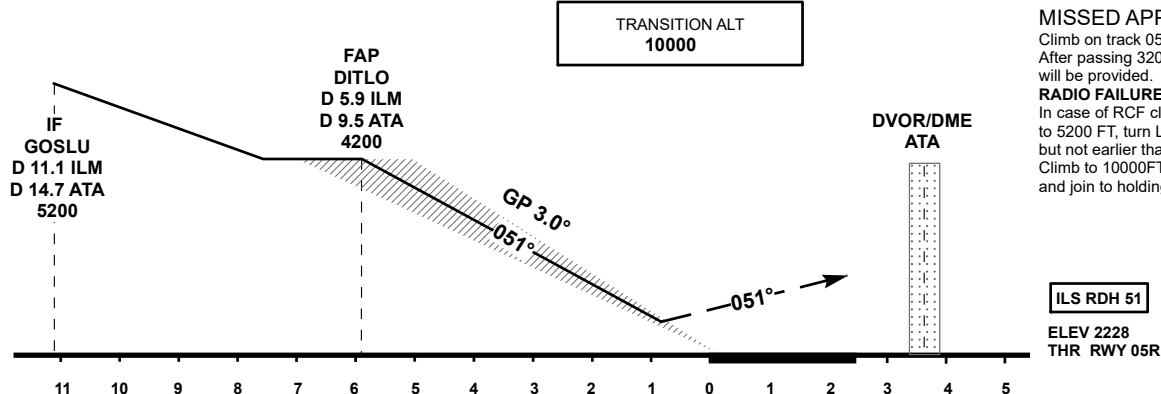
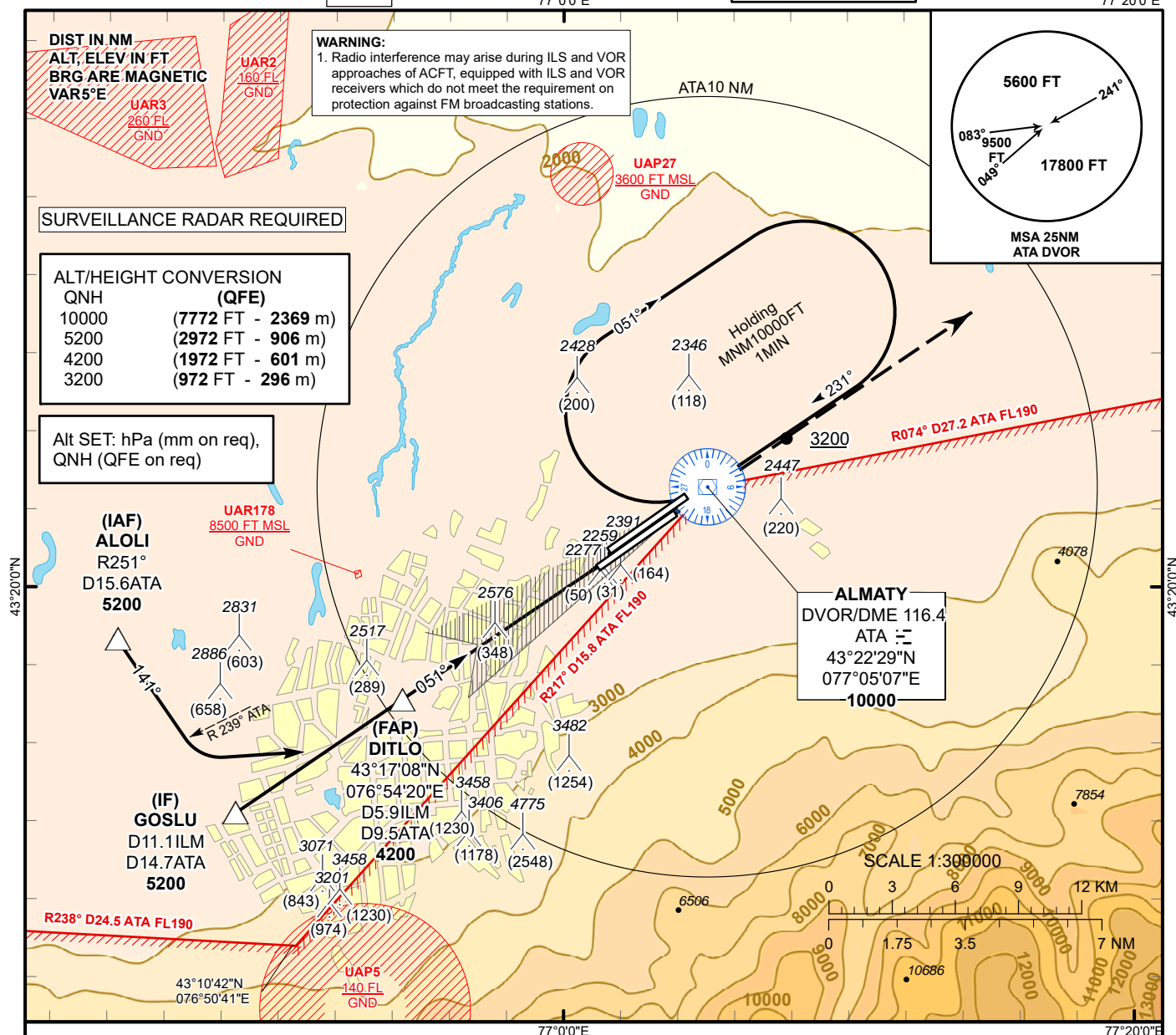


AERODROME ELEV **2238 FT**
HEIGHTS RELATED TO
THR RWY 05R - ELEV **2228 FT**

ALMATY APPROACH 118.3
ALMATY RADAR 126.8
ALMATY TOWER 119.4
ALMATY ATIS (EN) 129.8
ALMATY ATIS (RU) 135.1

ALMATY
ILS/DME
RWY 05R
77°20'0"E



MISSED APPROACH

Climb on track 051° to 5200.
After passing 3200 radar vectoring
will be provided.

RADIO FAILURE:

In case of RCF climb on track 051° to 5200 FT, turn LEFT to ATA, but not earlier than 6.5NM ATA. Climb to 10000FT (not below) to ATA and join to holding pattern.

ILS RDH 51

ELEV 2228
THR RWY 05R

Aircraft Category		A	B	C	D	DIST to THR DME ILM	NM	5.9	5	4	3	2	1
Straight-in Approach OCA/H						DME ATA	NM	9.5	8.6	7.6	6.6	5.6	4.6
	CAT I	2428(200)	2428(200)	2428(200)	2428(200)	ALTITUDE	FT	4200	3893	3566	3242	2919	2598
						HEIGHT	FT	1972	1665	1338	1014	691	370
DME ILM ZERO RANGED TO THR RWY 05R													
Aerodrome Operating Minima DH ft x RVR(CMV)	CAT I												
						GS	Kt	80	100	120	140	160	180
						Desc.Rate (5.2%)	ft/min	420	530	630	740	840	950

ALMATY
ILS/DME

AERONAUTICAL DATA TABULATION

ILS approach to RWY05R from ALOLI, GOSLU	
Fix/point	Coordinates
ATA DVOR/DME	43° 22' 29.4"N 077° 05' 07.0"E
ILM D5.9 ATA D9.5 (FAP DITLO)	43° 17' 08.1"N 076° 54' 19.6"E
GOSLU (IF) ILM D11.1 ATA 14.7	43° 14'13.1"N 076° 48'29.8"E
ALOLI (IAF) R251° D15.6ATA	43° 18'40.9"N 076° 44'20.6"E
THR RWY 05R	43° 20' 28.46"N 077° 01' 02.85"E
ILM LOC	43° 21' 59.6"N 077° 04' 06.7"E